

國立清華大學 109 學年度碩士班考試入學試題

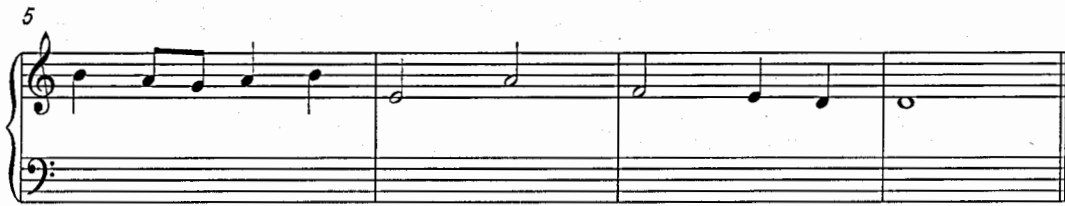
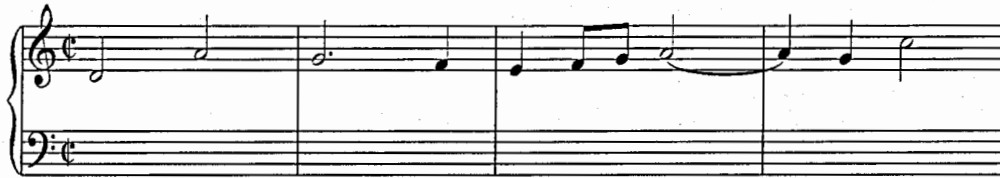
系所班組別：音樂系碩士班 理論作曲組

考試科目（代碼）：樂曲分析 (7703)

（總分 100 分） 共 3 頁，第 1 頁 \*請在【譜上或答案卷】作答

一、請將下列旋律寫出 16 世紀風格之華彩對位（在此頁五線譜上作答）。

(20 分)



國立清華大學 109 學年度碩士班考試入學試題

系所班組別：音樂系碩士班 理論作曲組

考試科目（代碼）：樂曲分析 (7703)

(總分 100 分) 共 3 頁，第 2 頁 \*請在【譜上或答案卷】作答

二、請分析下列樂曲並回答下列：1. 樂曲時期與風格 2. 作曲手法 3. 作曲家。  
(在答案卷作答) (20 分)

Musical score for piano in 2/4 time, key of D major. The score consists of two staves. The right hand has a melodic line with eighth notes and a slur over the first four measures. The left hand has a bass line with chords and eighth notes. The dynamic marking *p* is present in the first four measures.

三、請分析下列樂曲並回答下列：1. 樂曲時期與風格 2. 作曲手法 3. 作曲家。  
(在答案卷作答) (20 分)

Musical score for piano in 2/4 time, key of D major. The score consists of two staves. The right hand has a chordal texture with a dynamic marking *f*. The left hand has a bass line with chords and eighth notes.

# 國立清華大學 109 學年度碩士班考試入學試題

系所班組別：音樂系碩士班 理論作曲組

考試科目（代碼）：樂曲分析 (7703)

（總分 100 分） 共 3 頁，第 3 頁 \*請在【譜上或答案卷】作答

四、請分析下列樂曲並回答下列：1. 樂曲時期與風格 2. 作曲手法 3. 作曲家。  
（在答案卷作答）（40 分）

The image shows a musical score for a chamber ensemble. The score is written in 4/4 time with a tempo marking of  $\text{♩} = 80$ . The instruments are arranged in the following order from top to bottom: Clarinet, Bass Clarinet, Horn 1, Horn 2, Harp, Violin 1, Violin 2, Viola, and Violoncello. The key signature has one sharp (F#) and the time signature is 4/4. The score includes various dynamics such as *p* (piano), *mp* (mezzo-piano), and *pizz.* (pizzicato). The Harp part features chords in the left hand and single notes in the right hand. The string parts (Violin 1, Violin 2, Viola, Violoncello) include pizzicato and arco markings. The woodwind parts (Clarinet, Bass Clarinet, Horns) have specific melodic lines and dynamics. The score is divided into two systems, with the tempo marking  $\text{♩} = 80$  appearing at the beginning of each system.