

# 國立中山大學 106 學年度碩士暨碩士專班招生考試試題

科目名稱：音樂理論【音樂系碩士班】

題號：461001

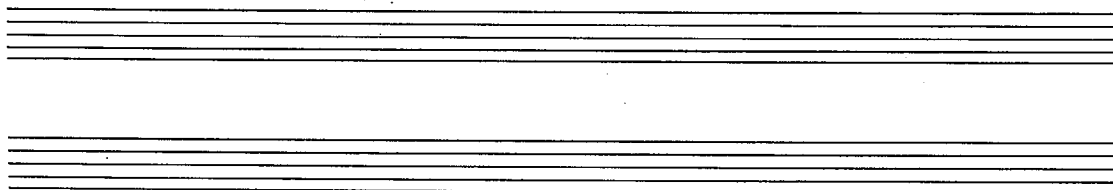
※本科目依簡章規定「不可以」使用計算機(問答申論題)

共 5 頁第 1 頁

【請作答於此試題紙上】

壹、寫作題。(14%)

一、寫出米索利第安調式 (Mixolydian) 和下米索利第安調式 (Hypomixolydian) 的音域 (range, ambitus)，尾音 (final) 與支配音 (dominant, tenor)。(6%)



一、以兩個聲部的進行方式，完整的寫出下列所指定的各種和聲外音，包含：經過音、鄰音、掛留音和駢枝音。(8%)

經過音

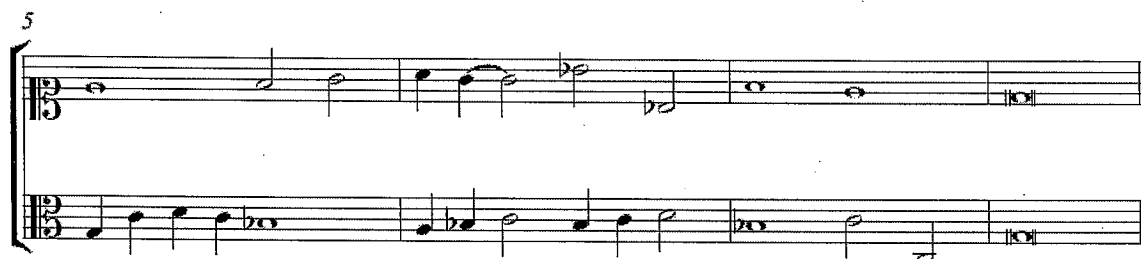
鄰音

掛留音

駢枝音



貳、改錯題。(20%) 以帕勒斯崔那(Palestrina)的風格為標準，圈出錯誤位置並註明原因。



# 國立中山大學 106 學年度碩士暨碩士專班招生考試試題

科目名稱：音樂理論【音樂系碩士班】

題號：461001

※本科目依簡章規定「不可以」使用計算機(問答申論題)

共 5 頁第 2 頁

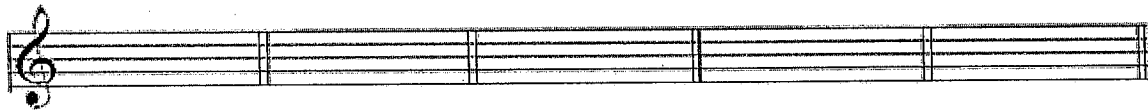
## 叁、變化和絃分析題。(16%)

一、根據所標示的調性，寫出和絃級數含轉位符號。(5%)



f: \_\_\_\_\_      G: \_\_\_\_\_      Eb: \_\_\_\_\_      E: \_\_\_\_\_      Bb: \_\_\_\_\_

二、根據所註明的和絃級數與轉位符號，寫出該和絃的調號和音高。(5%)



F: vii<sup>o</sup>/ii      Eb: N6      D: V<sup>1</sup>/V      Ab: bVI      C: ii <sup>4</sup>/<sub>3</sub>

三、以同音異名的方式轉換音高，寫出其他和絃的調性、級數與轉位符號和音高(同音異名的調性只能算是答對一個調性，例如：C#調=Db調)。(6%)

例如：



Bb: V<sup>o</sup> = A: Ger-6



A: vii<sup>o</sup> 7 = \_\_\_\_\_ = \_\_\_\_\_ = \_\_\_\_\_ = \_\_\_\_\_

肆、曲式與分析題。(共 50%) 下頁譜例是韋伯 (Carl Maria von Weber) 第四號鋼琴奏鳴曲第一樂章的呈示部。請分析並回答下列問題：

一、請於樂譜上寫出調性、各樂句底層之和聲進行以及終止式。(14%)

二、請將答案寫於下方，定義各個段落(或樂段)的結構角色並寫出起始小節數，例如：第二主題：74~89 小節【此為書寫方式之範例，非正確解答請勿抄寫】(8%)。

三、此譜例各段落間的銜接方式為何(請寫於譜上)。(3%)

# 國立中山大學 106 學年度碩士暨碩士專班招生考試試題

科目名稱：音樂理論【音樂系碩士班】

題號：461001

※本科目依簡章規定「不可以」使用計算機(問答申論題)

共 5 頁第 3 頁

四、譜上標示 (1)~(5) 處的和聲外音類型為何？(5%)

(1) \_\_\_\_\_ (2) \_\_\_\_\_ (3) \_\_\_\_\_ (4) \_\_\_\_\_ (5) \_\_\_\_\_

五、請於譜上寫出指定片段詳細的和聲進行與和弦級數。(12%)

1. 18~20 小節 2. 35~38 小節

六、請描述此段音樂中結構事件(主題、過門、尾奏等)間的關係和變化方式,包含調性、動機、旋律等的使用。(8%)

## 【譜例】

Moderato  
*con duolo*

6

12

18

*ff* *pp* *tr* *con agitazione*

國立中山大學 106 學年度碩士暨碩士專班招生考試試題

科目名稱：音樂理論【音樂系碩士班】

題號：461001

※本科目依簡章規定「不可以」使用計算機(問答申論題)

共 5 頁第 4 頁

Musical score system 1 (measures 22-24). The system consists of two staves. The upper staff is in treble clef and the lower staff is in bass clef. The key signature has one sharp (F#). Measure 22 starts with a piano (p) dynamic. The music features complex rhythmic patterns with many sixteenth and thirty-second notes. Performance markings include *cresc.* and *f*. Fingerings and articulation marks are present throughout.

Musical score system 2 (measures 25-27). The system consists of two staves. The upper staff is in treble clef and the lower staff is in bass clef. The key signature has one sharp (F#). Measure 25 starts with a piano (p) dynamic. The music continues with complex rhythmic patterns. Performance markings include *f* and *p*. Fingerings and articulation marks are present throughout.

Musical score system 3 (measures 28-30). The system consists of two staves. The upper staff is in treble clef and the lower staff is in bass clef. The key signature has one sharp (F#). Measure 28 starts with a piano (p) dynamic. The music features complex rhythmic patterns. Performance markings include *cresc.*, *ten.*, *mf*, *ten.*, and *ff*. Fingerings and articulation marks are present throughout.

Musical score system 4 (measures 31-33). The system consists of two staves. The upper staff is in treble clef and the lower staff is in bass clef. The key signature has one sharp (F#). Measure 31 starts with a piano (p) dynamic. The music features complex rhythmic patterns. Performance markings include *ff* and *pesante*. Fingerings and articulation marks are present throughout.

Musical score system 5 (measures 34-36). The system consists of two staves. The upper staff is in treble clef and the lower staff is in bass clef. The key signature has one sharp (F#). Measure 34 starts with a piano (p) dynamic. The music features complex rhythmic patterns. Performance markings include *p* and *dolce*. Fingerings and articulation marks are present throughout.

Musical score system 6 (measures 37-39). The system consists of two staves. The upper staff is in treble clef and the lower staff is in bass clef. The key signature has one sharp (F#). Measure 37 starts with a piano (p) dynamic. The music features complex rhythmic patterns. Performance markings include *p* and *ff*. Fingerings and articulation marks are present throughout.

國立中山大學 106 學年度碩士暨碩士專班招生考試試題

科目名稱：音樂理論【音樂系碩士班】

題號：461001

※本科目依簡章規定「不可以」使用計算機(問答申論題)

共 5 頁第 5 頁

45

Musical score system 45, measures 45-50. Treble and bass clefs. Includes fingering numbers (1-5), slurs, and dynamic markings like *Red.* and *\* Red.*

51

Musical score system 51, measures 51-56. Treble and bass clefs. Includes fingering numbers, slurs, and dynamic markings like *mf* and *f*.

56

Musical score system 56, measures 56-61. Treble and bass clefs. Includes fingering numbers, slurs, and dynamic markings like *p* and *f*.

61

Musical score system 61, measures 61-66. Treble and bass clefs. Includes fingering numbers, slurs, and dynamic markings like *mf*.

65

Musical score system 65, measures 65-70. Treble and bass clefs. Includes fingering numbers, slurs, and dynamic markings like *f* and *p*.

69

Musical score system 69, measures 69-74. Treble and bass clefs. Includes fingering numbers, slurs, and dynamic markings like *f*.

72

Musical score system 72, measures 72-77. Treble and bass clefs. Includes fingering numbers, slurs, and dynamic markings like *ff*.